

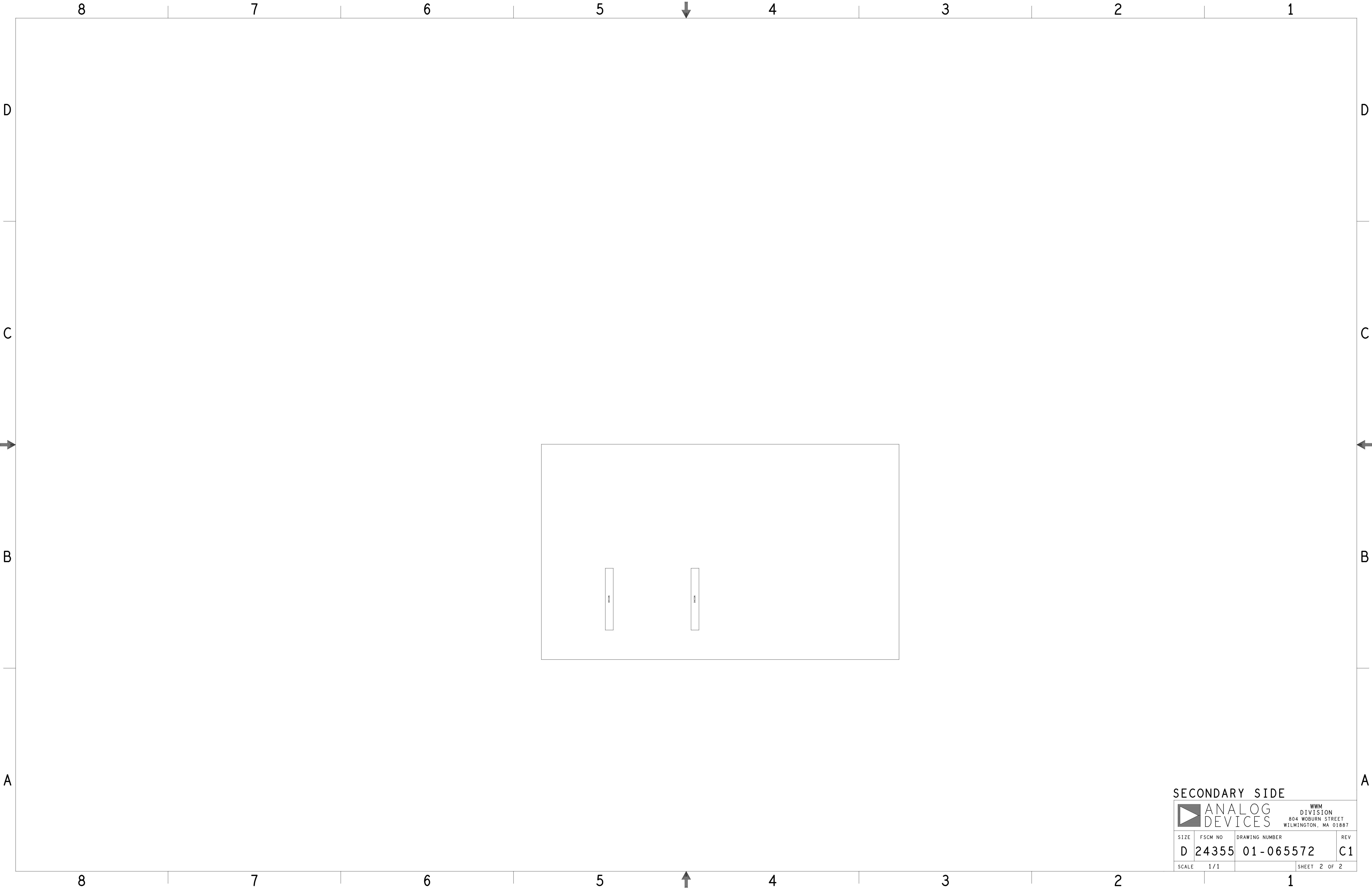
REVISIONS			
REV	DESCRIPTION	DATE	APPROVED
A	INITIAL RELEASE	26MAR21	A.CATAPANG
B	CHANGES AS PER ECR-106954	30MAY23	A.CATAPANG
C	CHANGES AS PER ECR-115516	10AUG23	A.OESMER
C1	CHANGES AS PER ECR-116503	16AUG23	A.OESMER

ASSEMBLY NOTES:

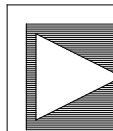
- BOARD ACCEPTABILITY PER ANALOG DEVICES, INC. SPECIFICATION TST00119 (LATEST REVISION).
- REPAIRS PER IPC-7711/21(LATEST REVISION) ARE ALLOWED.
- REPAIRS ARE NOT ALLOWED IN SOLDERMASK FREE AREAS ON EITHER SIDE OF THE BOARD.
- RoHS COMPLIANCE: ASSEMBLY VENDOR SHOULD ASSURE COMPLIANCE WITH LEAD-FREE AND RoHS PCB ASSEMBLY STANDARDS (EU RoHS DIRECTIVE 2002/95/EC).
- INSTALL STANDOFF ON SECONDARY SIDE(M032310) AND SCREW(M000103) ON PRIMARY SIDE.

PRIMARY SIDE

UNLESS OTHERWISE SPECIFIED DIMENSIONS ARE IN INCHES TOLERANCES DECIMALS FRACTIONS ANGLES .XX -.010 .1/32 .1 .XXX -.005 .1/32 .1 .XXXX -.0050 .1/32 .1	APPROVAL	DATE	<div><div></div><div>ANALOG DEVICES</div><div>WWM DIVISION 804 WOBURN STREET WILMINGTON, MA 01887</div></div> <div>TITLE ASSEMBLY POWER CONTROL BOARD CUSTOMER EVAL Z</div> <div>SIZE FSCM NO DRAWING NUMBER REV D 24355 01-065572 C1</div>			
	TEMPLATE ENGINEER					
	HARDWARE SERVICES	26MAR21				
	HARDWARE SYSTEMS					
MATERIAL	TEST ENGINEER					
	COMPONENT ENGINEER	26MAR21				
	TEST PROCESS					
	HARDWARE RELEASE	26MAR21				
FINISH	DESIGNER	26MAR21				
	PTD ENGINEER	26MAR21				
	A.CATAPANG					
	CHECKER					
DO NOT SCALE DWG			SCALE	1/1	SHEET 1 OF 2	



SECONDARY SIDE

		WWM DIVISION 804 WOBURN STREET WILMINGTON, MA 01887	
SIZE	FSCM NO	DRAWING NUMBER	REV
D	24355	01-065572	C1
SCALE	1/1	SHEET 2 OF 2	